

Applications

- Building,
- General circuits for Industry,
- Water and Industry in non-corrosive environments.

General information

- The range of MN manual actuators have been designed with worm wheel and screw kinematics and gear casing (zinc-aluminium alloy).
- The mounting plate is in accordance with ISO 5211 standard.
- Equipped with an interchangeable insert, they can be easily fitted on different ¼ turn valve shaft (square end, flat end).
- These actuators are supplied with a handwheel and a visual pointer.
- Factory lubricated, they do not require any maintenance.
- These actuators are mounted directly or by means of an adaptor on ¼ turn valves mounting plate.

Protection

- They are hose and fine dust proof, protection degree equivalent to IP 65.

External coating

- Polyurethane paint, colour black RAL 9011, 50 µm thickness.

Working temperature range

- De -20 °C to +80 °C.

Production range

Type	Nominal output torque (Nm)	Nominal input torque (Nm)	Number of turn handwheel	ISO 5211 mounting plate*	Maximal allowable dimensions for the shaft		
					Height	Driving by	
					square	flat	
MN 12	125	13	10	F05 – F07	35	-	14
MN 25	250	25	10	F05 – F07	40	19	19
MN 40	400	40	9	F07 – F10	45	27	22
MN 80	800	70	11	F10 – F12	60	27	22

* Direct adaptation onto identical mounting plate.

Adaptation by intermediate flange onto different plate (different size or shape).

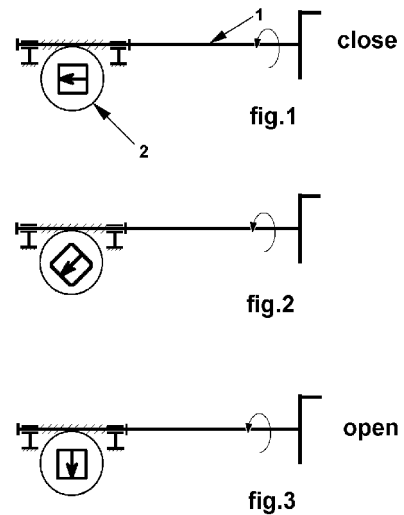
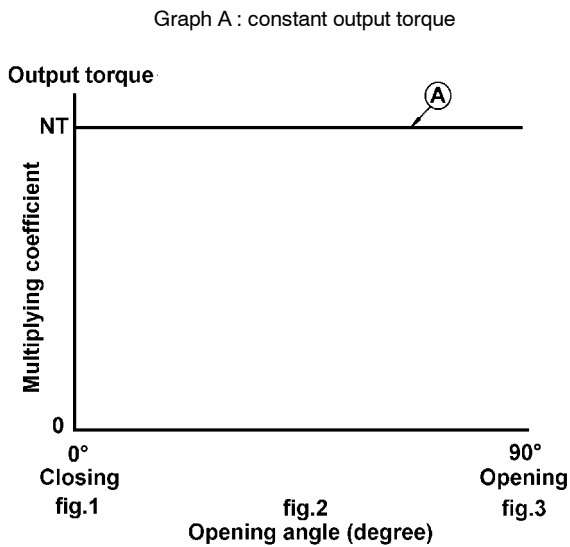
These actuators are equipped with interchangeable inserts manufactured to the size and the form on different valve shaft for motorized operation (square end, flat end).

Operation

MN actuators are designed to ensure clockwise valve closure.

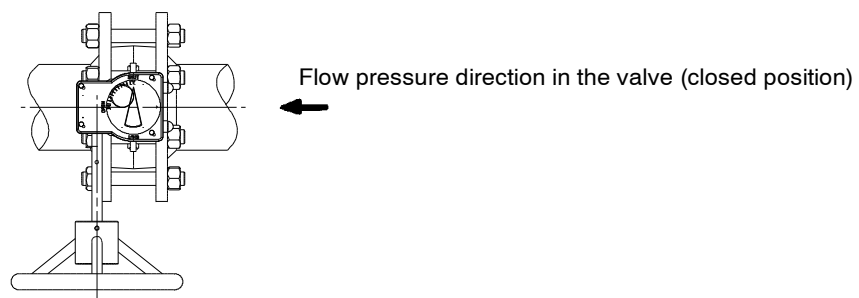
The worm wheel and screw kinematics allows to deliver a constant output torque.

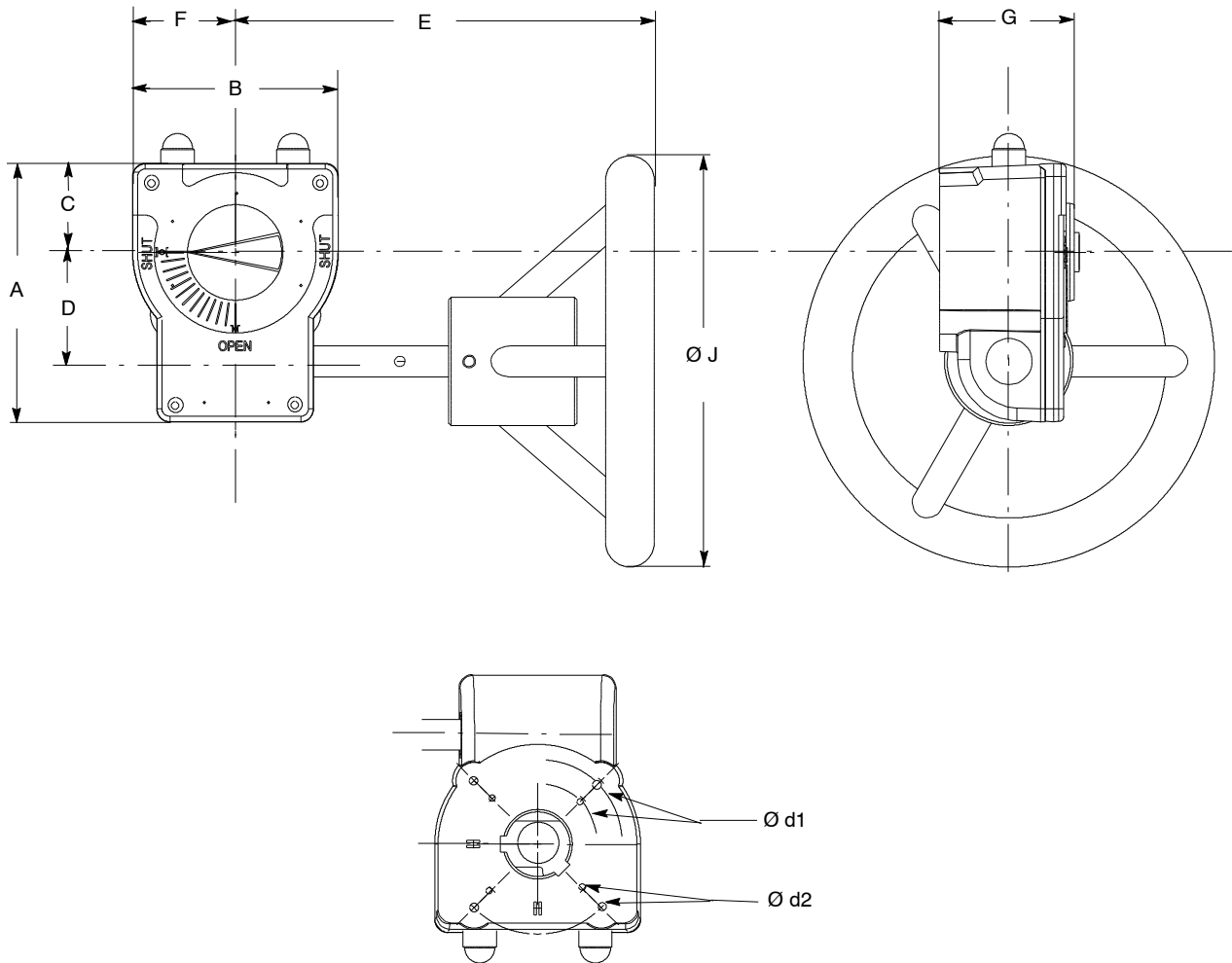
Operation is achieved by handwheel, linked to the operating screw ① driving in rotation the worm wheel ② integral with the valve shaft.



Mounting on valves

The actuator is fitted onto the valve in only one position **Arrangement N - Position 1**, according to drawing below. The connection bolting is in zinc coated treated steel.



Dimensions (mm) and weight (kg)
Handwheel control


Type	Handwheel control								Interface ISO 5211				Weight (kg)
	A	B	C	D	E	F	G	J	ref.	Ød1	Ød2	n	
MN 12	100,5	80	34,5	42,5	133	40	53	160	F05	50	M6	4	1,2
									F07	70	M8	4	
MN 25	100,5	80	34,5	42,5	181	40	59	200	F05	50	M6	4	1,7
									F07	70	M8	4	
MN 40	117,5	100	42,5	50	196	50	68	200	F07	70	M8	4	2,6
									F10	102	M10	4	
MN 80	160,0	146	65,0	60	236	73	79	250	F10	102	M10	4	5,0
									F12	125	M12	4	



KSB S.A.S.
4, allée des Barbanniers • 92635 Gennevilliers Cedex (France)
Tel.: +33 1 41 47 75 00 • Fax: +33 1 41 47 75 10 • www.ksb.com

